

FORSYTH COUNTY-TRANSPORTATION & ENGINEERING DEPARTMENT

PLAN AND PROFILE OF PROPOSED SR 369 WIDENING AND SR 369 OVER SR 400 INTERCHANGE

FEDERAL ROUTE # 19 STATE ROUTE # 9, 306, 369, 400 P.I.No.0013369

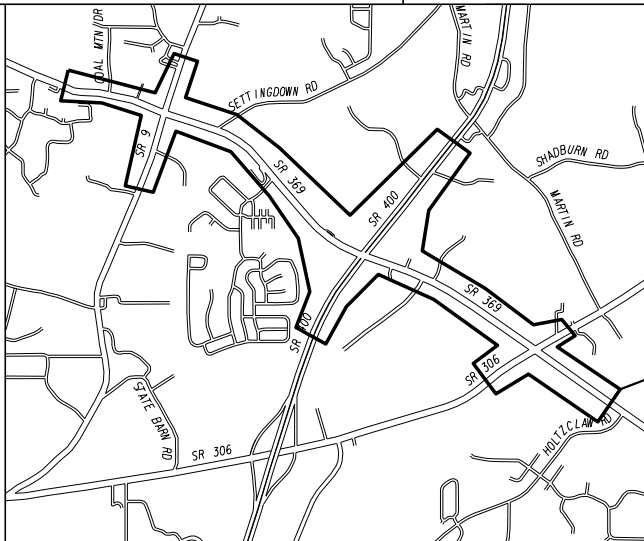


02/14/2020

Tom Fravel

PREPARED BY:

DESIGN



LOCATION SKETCH

LOCATION AND DESIGN APPROVAL DATE:
MARCH 14, 2017

SPEED DESIGN:

- SR 400: 65 MPH
- SR 369/MATT HWY/BROWNS BRIDGE ROAD: 45 MPH
- SR 9/DAHLONEGA HIGHWAY: 45 MPH
- SR 306/KEITH BRIDGE ROAD: 50 MPH
- SETTINGDOWN ROAD: 40 MPH
- BRIDGETOWNE DRIVE: 25 MPH
- RAMPS: A,C,D 35 MPH MIN., B 30 MPH MIN.

- SR 400 TRAFFIC A.D.T.: 58,910 (2020)
- SR 400 TRAFFIC A.D.T.: 121,880 (2040)
- SR 400 TRUCKS %: 7.4%
- SR 369 TRAFFIC A.D.T.: 22,880 (2020)
- SR 369 TRAFFIC A.D.T.: 41,070 (2040)
- SR 369 TRUCKS %: 17.7%

THIS PROJECT CONTAINS POST CONSTRUCTION BMP'S.

FUNCTIONAL CLASS:

- SR 369: MAJOR COLLECTOR
- US 19/SR 400: FREEWAY
- THIS PROJECT IS 100% IN FORSYTH COUNTY AND IS 92% IN CONG. DIST. NO. 9 & 8% IN CONG. DIST. NO. 7.

PROJECT MIDPOINT
STA. 171+75.00
N: 1551095.20
E: 2320390.72

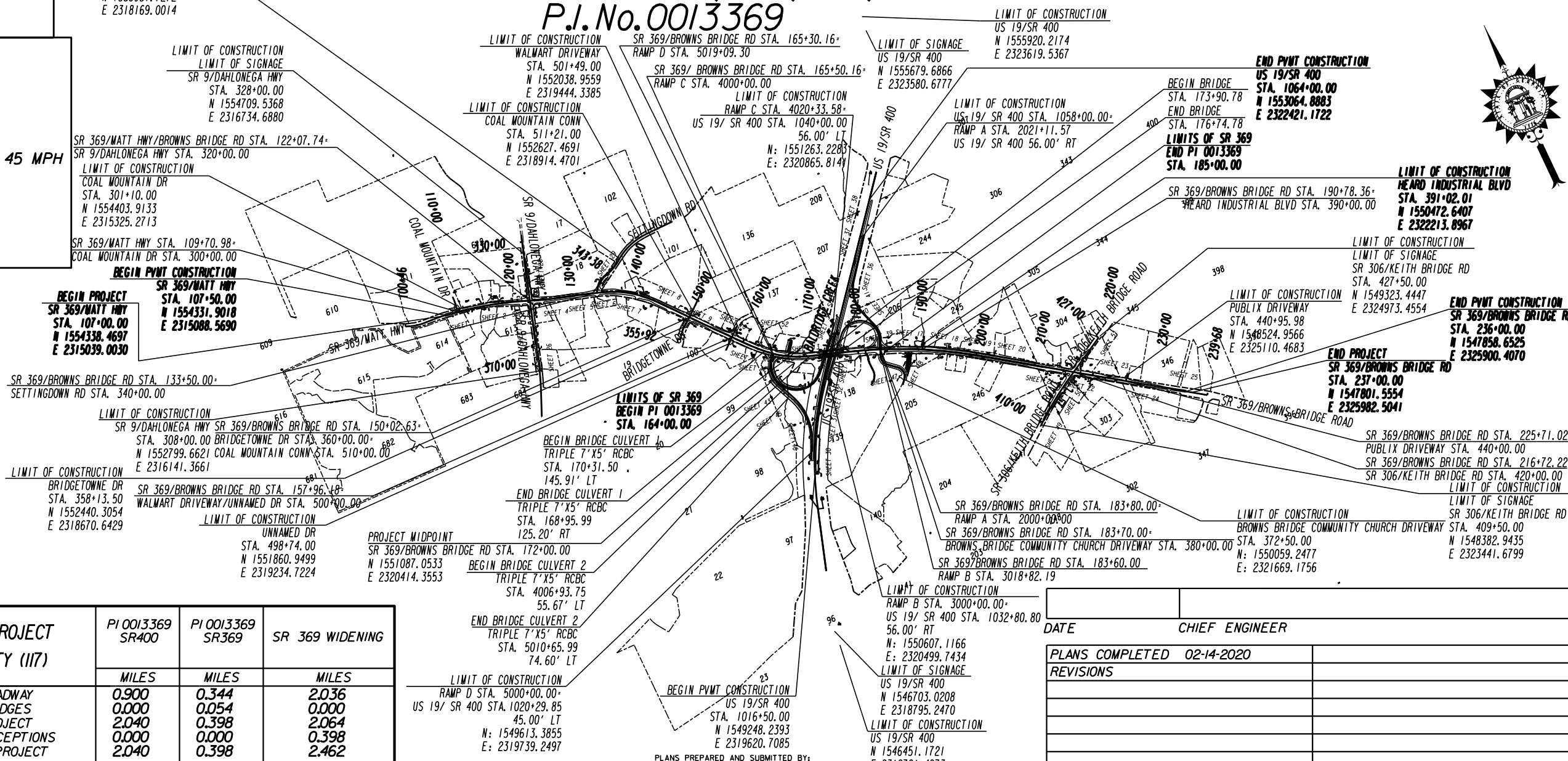
PROJECT DESIGNATION: SF.

LENGTH OF PROJECT
FORSYTH COUNTY (I17)

	PI 0013369 SR400	PI 0013369 SR369	SR 369 WIDENING
NET LENGTH OF ROADWAY	0.900	0.344	2.036
NET LENGTH OF BRIDGES	0.000	0.054	0.000
NET LENGTH OF PROJECT	2.040	0.398	2.064
NET LENGTH OF EXCEPTIONS	0.000	0.000	0.398
GROSS LENGTH OF PROJECT	2.040	0.398	2.462

THIS PROJECT HAS BEEN PREPARED USING THE HORIZONTAL GEORGIA COORDINATE SYSTEM OF 1984 (NAD 1983)/94 WEST ZONE, AND THE NORTH AMERICAN VERTICAL DATUM (NAVD) OF 1988.

NOTE: ALL REFERENCES IN THIS DOCUMENT, WHICH INCLUDES ALL PAPERS, WRITINGS, DOCUMENTS, DRAWINGS, OR PHOTOGRAPHS USED, OR TO BE USED IN CONNECTION WITH THIS DOCUMENT, TO "STATE HIGHWAY DEPARTMENT OF GEORGIA," "STATE HIGHWAY DEPARTMENT," "GEORGIA STATE HIGHWAY DEPARTMENT," "HIGHWAY DEPARTMENT," OR "DEPARTMENT" WHEN THE CONTEXT THEREOF MEANS THE STATE HIGHWAY DEPARTMENT OF GEORGIA, AND SHALL BE DEEMED TO MEAN THE DEPARTMENT OF TRANSPORTATION.



DATE _____ CHIEF ENGINEER _____

PLANS COMPLETED 02-14-2020

REVISIONS

NO.	DESCRIPTION	DATE



DRAWING No.
01-0001

PLANS PREPARED AND SUBMITTED BY:

AEI
AMERICAN ENGINEERS, INC.

0 65 Aberdeen Drive
Glasgow, KY 42401
(270) 651-7220

0 1634 White Circle, Suite 101
Marietta, GA 30066
(770) 421-8422

0 2500 Nelson Miller Parkway
Louisville, KY 40223
(502) 245-3953

DESIGN CONSULTANT

PROFESSIONAL ENGINEERING